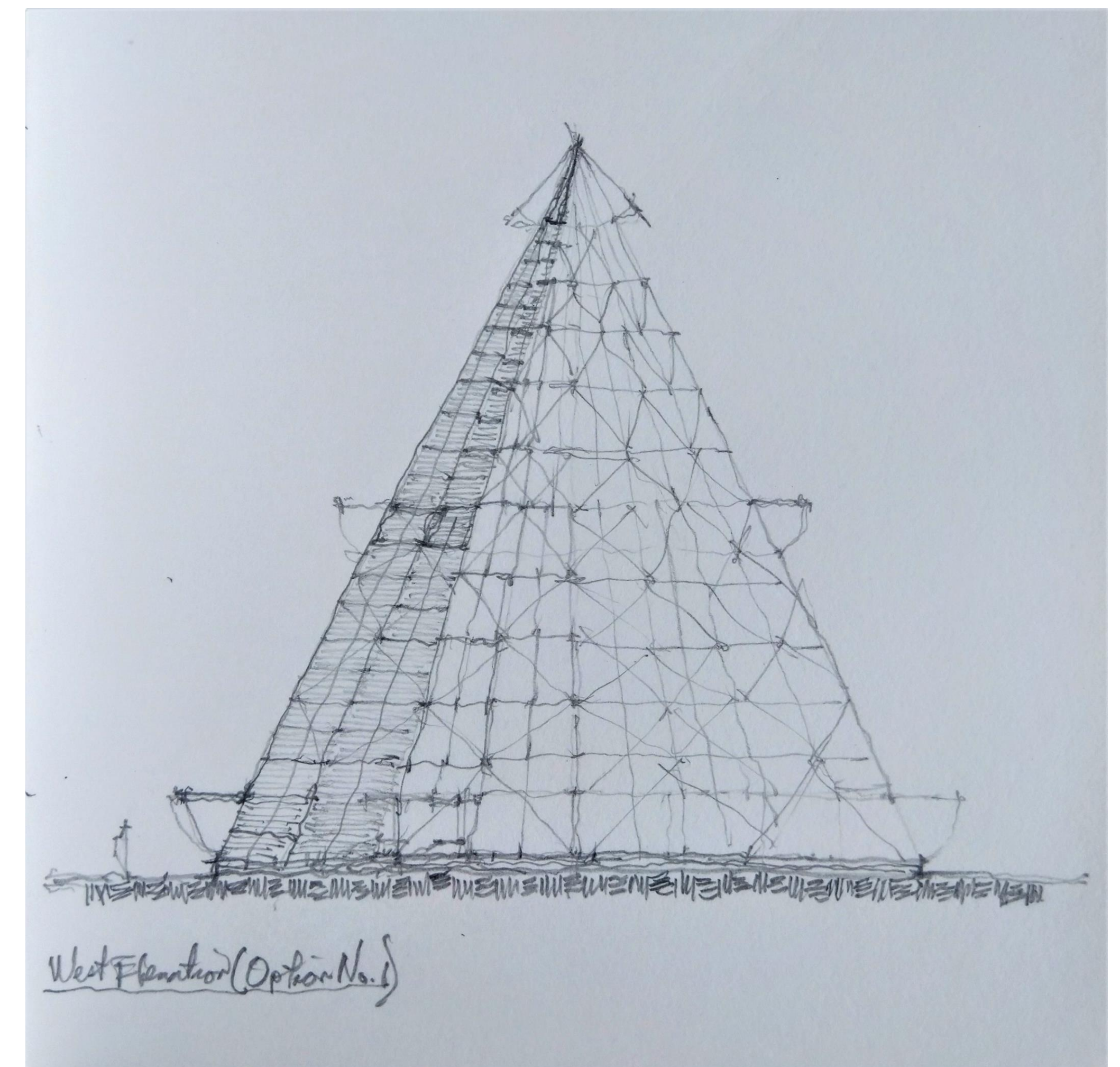
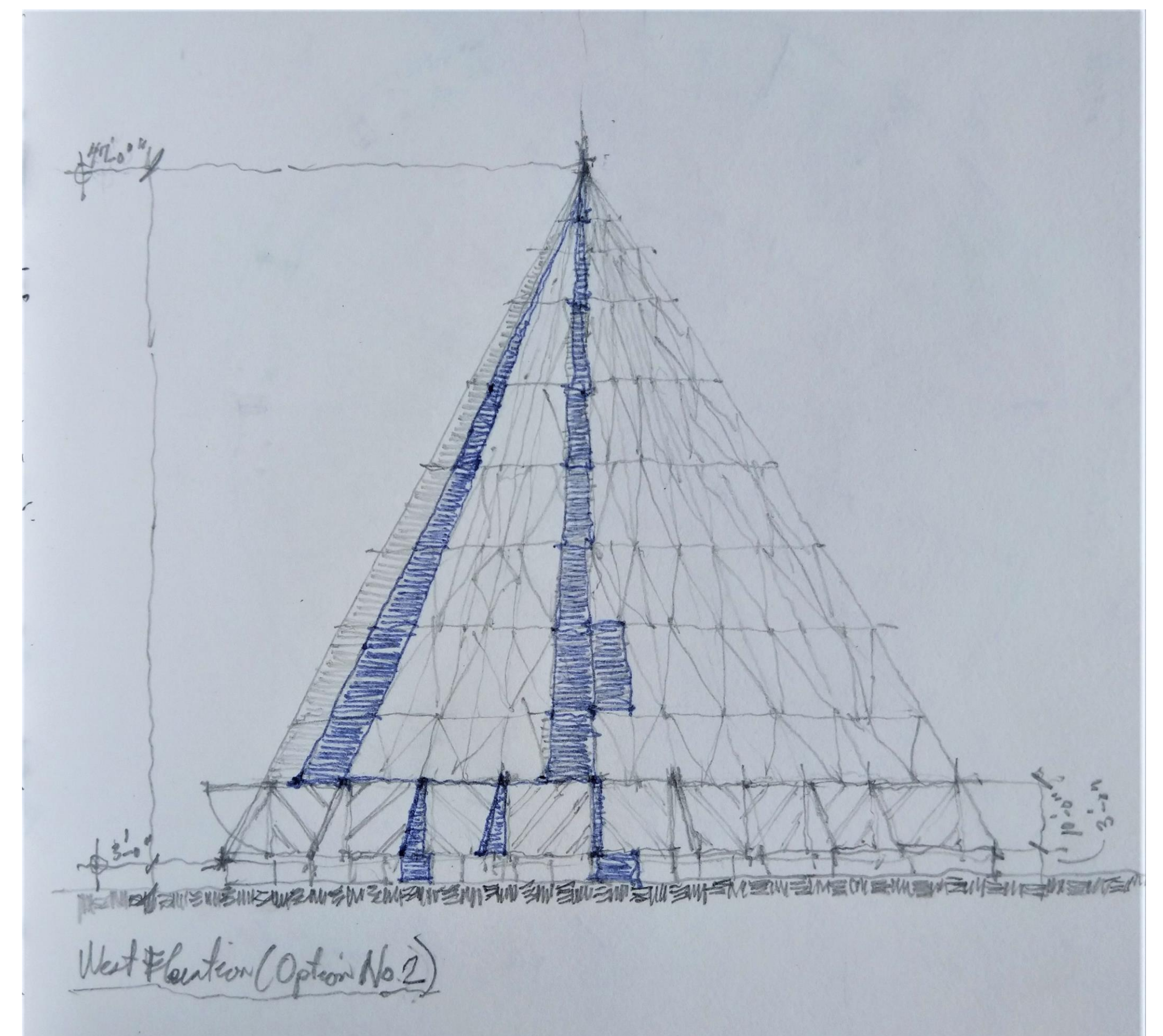


## MAIN FLOOR PLAN

The structure is composed of sixteen Glulam (glued laminated timber) members inclined to acquire the renowned teepee outline of the wick up. This arrangement is paramount, for a column free space is created to facilitate the reconfiguring of interior elements thus supporting a variety of events. Guests can tackle small ongoing projects comfortably under one roof driven holistically after the same objectives. These events could include exhibitions, seminars, and meetings for science communication and positive public relations to raise awareness of the potential found at the ranch and its future endeavors.



## WEST ELEVATION OPTION NO. 1



## WEST ELEVATION OPTION NO. 2